



Cromarty 36

"This is one classy boat. She looks good and sails beautifully"



"IN CONTRAST to the current generation of production motor-sailers or wheelhouse cruisers which are based -on light to moderate displacement cruising hulls, the Cromarty is a solid, heavy displacement yacht"



"The design concept of the Cromarty places maximum emphasis on creating a feeling of spaciousness"

The system of sail control is just one example which illustrates the considerable thought that has clearly gone into designing and planning the 36."

ClassicBoat
The love of traditional craft



The Cromarty 36 Motor Sailer, a classic motorsailer, designed by Wyatt and Freeman and has been reborn.

- Comfortable and safe sailing in all weathers
- Good sailing and motoring performance
- Easy boat handling for short handed crew
- A great quality classic yacht at an affordable price.

About the Cromarty 36

If you enjoy cruising in supreme comfort, entertaining in style or just soaking up the sun, the Cromarty 36 is tailor-made for you.

Gordon Wyatt and David Freeman, designers of the renowned Fisher Class of motor sailers, have excelled themselves with the Cromarty 36. She is an exceptionally strong, superbly finished three-cabin, six berth cruising masterpiece. Each boat is individually hand built by Neil Marine to the owners requirements

Emphasis throughout the yacht has been placed on space, function, light and comfort. Step aboard and you immediately feel at home.

The Cromarty 36 has an easy to sail ketch rig. Wide side decks with low bulwarks, robust stanchions and the split rig with manageable sail areas, enable alterations to be made to the sail plan with consummate ease and safety.

Add a furling system and sailing the Cromarty 36 short-handed becomes simplicity itself. All sheets and halyards are led to the helm position, making her easy to manage single handed or as a couple.

Wide sturdy decks give your crew a feeling of security when working forwards and the saloon coach roof provides a perfect sunbathing opportunity on those rare English summer days.

Whether steered from above or below deck, she is well balanced and responsive making sailing a delight whatever the weather. Add some sail and the Cromarty 36 comes into her element. All you have to do is decide where to go and at what speed. Once in harbour the three bladed propeller and 2.4:1 reduction and reverse gearbox make manoeuvring into the tightest berth easy.

Centre cleats and good balance make her easy to berth short handed, Just take a spring from the centre cleat to the pontoon, motor forward slowly, and she will stay in position, giving you all the time in the world to secure bow and stern lines.

Two sumptuous double cabins (one with optional double berth) each with en-suite WC and shower compartment; a luxurious raised deck saloon with panoramic views and comfortable settees (one converts into a double berth); a spacious dining table seating six and a gourmet galley with double sink, fridge and gas cooker. There is even space for a microwave.

Combined, these all add up to the comfort and convenience of your very own home away from home.



The Builders

Neil Marine is the internationally known trade mark of **Neil Fernando & Company (Pvt) Ltd.** The company is one of the pioneers in the boatbuilding industry in Sri Lanka and during the last quarter century it has supplied more than 25,000 boats. They also produced many of the mouldings for the well known Fisher range of Motor Sailers.

The Cromarty 36 was originally built by Blondecell in Lymington. Due to the high cost of production tooling, building of the Cromarty 36 was transferred from U K to Sri Lanka where Neil Marine are able to maintain the same high standards that were maintained by Blondecell.

Neil Marine's reputation is derived from advanced technology, skilled craftsmanship and competitive pricing.

Neil Marine's production process had been approved by Lloyds & Det Norske Veritas, and in the year 2006 accredited by ISO 9001 – 2000 for its highest quality. World Marine is the sole UK Importer of the Cromarty.



Designed by Wyatt and Freeman

Gordon Wyatt and David Freeman are perhaps best known for their 'Fisher' range of cruising yachts. Lesser known in yachting circles is the high reputation they enjoy in the commercial market where hundreds of boats built to their designs operate throughout the world. Many of these have to work in weather conditions the average yachtsman wisely does his best to avoid.

All Wyatt & Freeman yacht designs are based on the premise that a cruising yacht should be equally prepared to meet adverse weather conditions. No concessions are made to the leisure industry and as much care has been taken in the design of the New Cromarty 36 as is given to commercial craft.

Many of the previous options now standard, including teak laid decks, Furling headsail, basic electronics pack, granite galley work surfaces. The benefits of low cost, high quality, Sri Lanka GRP production allow us to offer these superb cruising yachts, customised to your own requirements at very attractive prices.

Standard Inventory

Rig Sails and Spars

- Aluminium alloy Masts and Booms
- In-mast furling main
- Furling Headsail
- Stack pak Mizzen Sail

Deck Gear

- 45lb CQR Anchor and chain
- Lewmar deck fittings and winches
- Steering compass

Electrical Equipment

- One windscreen wiper on port side
- electrics panel with circuit breakers
- 2 batteries
- Raymarine Depth and speed

General Equipment

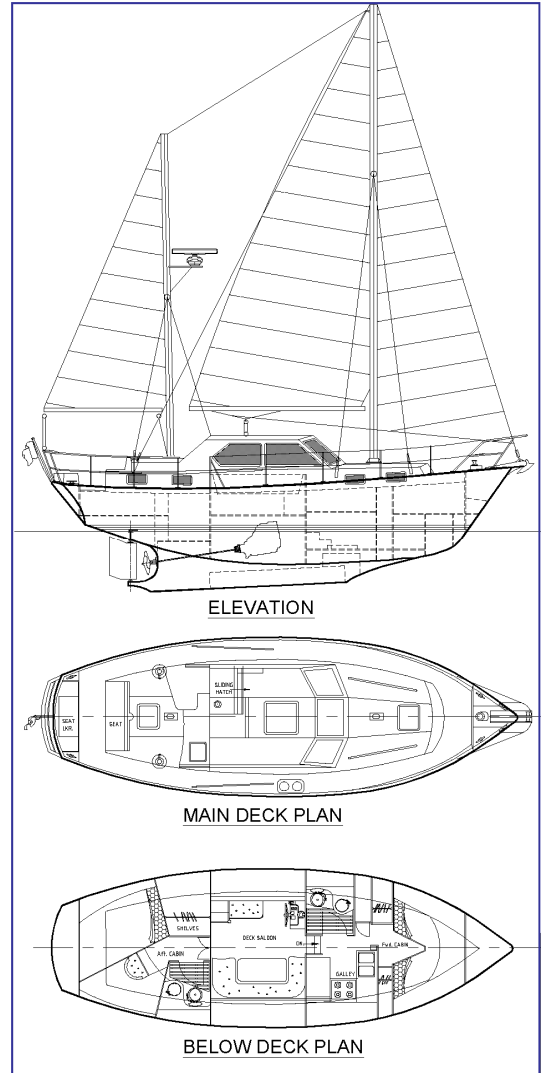
- lighting over all work surfaces and berths
- Grey water tank
- Black water holding tank
- Cooker and Gas installation.
- Fire extinguishers

Download a full standard specification from www.cromarty36.co.uk

Options

- Electric windlass
- Bow thruster
- Tri data and wind single or dual station
- AIS
- Navtex
- Spayhood and dodgers
- Cockpit cushions
- Beaching legs
- E80 Chartplotter and GPS
- VHF
- Autopilot
- Liferaft and safety equipment
- In mast furling Mizzen
- Boarding ladder
- Davits
- Single or double berth in master
- Cockpit table
- Cooker upgrade with hob, oven, grill
- Digital TV and entertainment system
- Heater
- Shore power and charger

Download a list of options and prices from www.cromarty36.co.uk



Volvo Penta D2-55 engine

The compact and reliable Volvo Penta D2-55 provide massive torque across the whole speed range for safe and easy manoeuvring, as well as reliable power for all your electrical needs. Still, the engine is really quiet, has low vibration and radically reduced exhaust emissions, making boating more comfortable than ever.

- Low rpm for high on-board comfort and low vibration
- Powerful low-end torque for easy manoeuvring plus plenty of power to drive the boat in a strong head wind.
- Powerful 115 A alternator with a built-in charging sensor as standard.
- Freshwater cooling standard to optimise engine working temperatures for greater efficiency and reduced maintenance

Fuel Capacity	100 gallon	455 litre	LOA	36'0"	11.0m
Mainsail area	250 sq ft	23.26 sq m	LWL	26'8"	8.13m
Mizzen Sail Area	100 sq ft	8.93 sq m	Beam	12'0"	3.66m
Genoa Sail Area	480 sq ft	44.65 sq m	Draft	4'7"	1.41m
Total sail area	830 sq ft	76.84 sq m	Displacement	8.5tons	8636Kg
Engine	55hp Volvo Penta D2 55		Ballast	3.0tons	3048Kg
CEA Category	A Ocean-going		Water Capacity	100 gal	455 litres

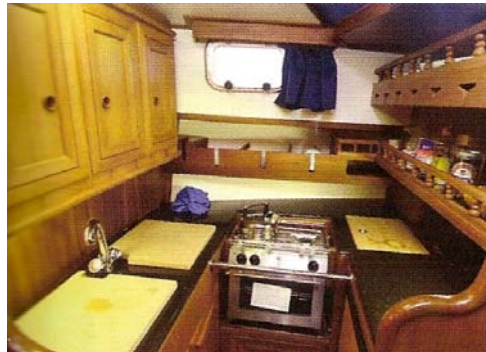
" He gets all the sailing he wants, I get all the luxury. . . it's the perfect combination"

*Pat Barrow
Cromarty Owner's wife*



"The true mark of the Cromarty's excellence for us is that once we took ownership we stopped looking for a next boat. This is as good as it gets, for us!"

*Paul Gardner
Cromarty Owner*



World Marine, a small family business based in Chichester, is the sole UK agent for the Cromarty 36, the Yarmouth 23, the new Fisher 10 and supervise the building in Sri Lanka and the fitting out and commissioning in UK

We also provide a Range of marine services including Marine Graphics, boat names and day skippered charter on a new Cromarty 36.

Contact us at:

www.world-marine.co.uk
info@world-marine.co.uk
+44 1243 383316

Prices

Fluctuations in exchange rates and oil price will affect the price, which can only be confirmed at time of placing order.

Please ask for our current price list, or download at:

www.cromarty36.co.uk

